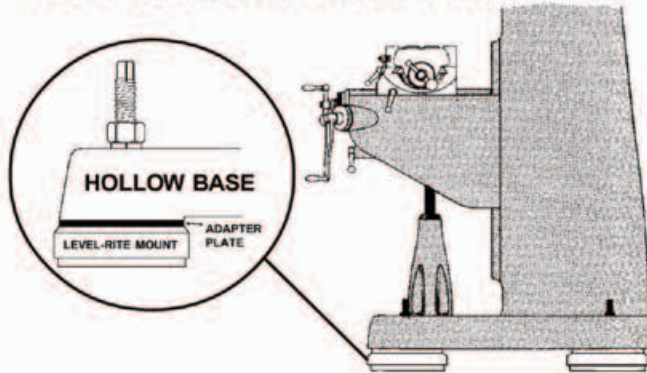


**LEVEL-RITE® MACHINERY MOUNTS  
 FOR HOLLOW BASE MACHINES**



Designed for hollow bases as found on certain models of mills, lathes, grinders and other machines. Provides vibration control, leveling and support.

Kit includes mounts with special length adjusting screws and adapter plates. Specify distance between bolt holes when ordering. Standard kits accommodate these distances:

- BP-2500 Kit 19.25" - 20.75" (489 mm - 527 mm)
- BP-5000 Kit 23.25" - 24.75" (591 mm - 629 mm)
- BP-5000S Kit 25.25" - 26.75" (641 mm - 679 mm)

Other spacings are available on request.

**LR-200 AND LR-500**



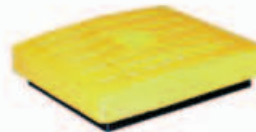
The LR-200 and LR-500 are designed for lighter equipment applications. The LR-200 is for loadings up to 250 lbs. (114 kg) per mount and the LR-500 is for up to 500 lbs. (227 kg). Both models have steel bases, elastomeric isolation pads, and built-in leveling screws.

**R SERIES**

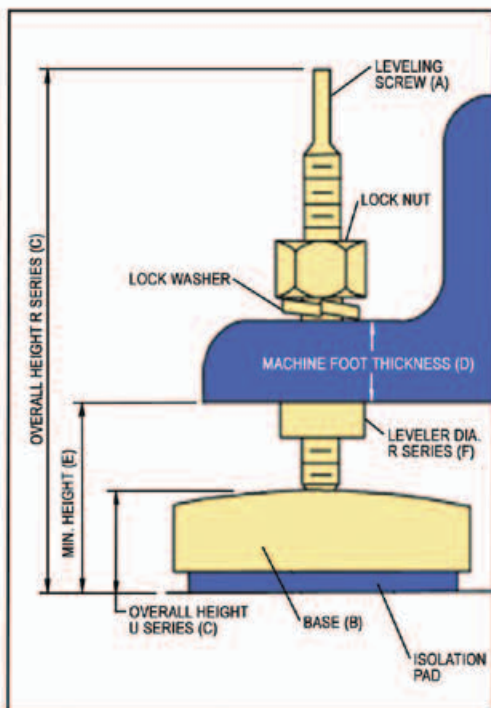


The R Series are self-contained leveling mounts with 1/2" (12.7mm) thick elastomeric pads for all types of machinery. Rugged cast iron and anodized steel construction with a free-floating leveling screw offer vertical adjustments of up to 2" (50mm). They will also compensate for pitched or uneven floors.

**U SERIES**



The U Series self-contained mounts with elastomeric pads are designed to accept machinery leveling screws and are supplied without leveling accessories. Their rugged, heavy duty construction is designed for precision and finishing equipment.



SPECIFICATIONS							
MODEL	MAX LOAD lbs./kg	A	B in./mm	C in./mm	D in./mm	E in./mm	F in./mm
LR-200	250/114	5/16-18	2.13/54 DIA.	3.50/89	2.50/64	.56/14	1.25/32
LR-500	500/227	3/8-16	3.50/89 DIA.	4.50/114	2.75/70	.63/16	2.50/64
R9	900/409	M12x1.75	3x3/76x76	7.00/178	2.75/70	1.75/44	1.75/44
R16	1600/727	M16x2	4x4/102x102	7.00/178	2.75/70	1.75/44	1.75/44
R28	2800/1273	M16x2	4x4/102x102	7.00/178	2.75/70	1.75/44	1.75/44
R36	3600/1636	M24x3	6x6/152x152	7.50/191	2.75/70	2.63/67	2.25/57
R48	4800/2182	M16x2	4x4/102x102	7.00/178	2.75/70	1.75/44	1.75/44
R100	10800/4909	M24x3	6x6/152x152	7.50/191	2.75/70	2.63/67	2.25/57
U9	900/409	-	3x3/76x76	1.00/25	-	-	-
U16	1600/727	-	4x4/102x102	1.00/25	-	-	-
U28	2800/1273	-	4x4/102x102	1.00/25	-	-	-
U36	3600/1636	-	6x6/152x152	1.50/38	-	-	-
U48	4800/2182	-	4x4/102x102	1.00/25	-	-	-
U100	10800/4909	-	6x6/152x152	1.50/38	-	-	-